

# THE ENTOMOLOGIST.

VOL. LVI.]

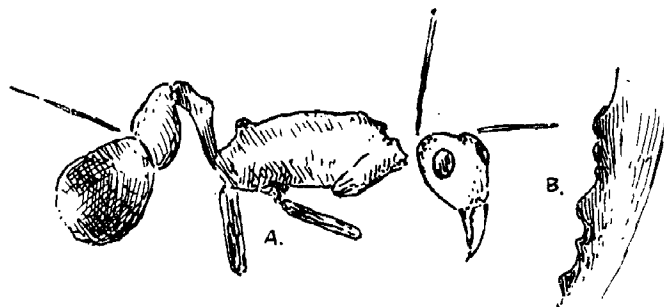
MARCH, 1923.

[No. 718

## THE EARLIEST KNOWN PONERINE ANT.

BY T. D. A. COCKERELL.

THE earliest known ants are from the Green River Eocene of the Rocky Mountain region. From this formation in Colorado I recently published (1921) a new genus *Eoformica*, belonging to the Formicinae (or Formicidae proper), apparently more or less related to the modern *Oecophylla*. Scudder had previously indicated species supposed to belong to the existing genera *Myrmica*, *Lio-metopum*, *Lasius* and *Camponotus*, but these generic assignments are subject to revision. Among all these there is no evidence of



*Archimyrmex rostratus*, Ckll. A. Magnified 4 diameters. B. Cutting edge of mandible.

the Poneridae (or Ponerinae), which are supposed to be the most primitive of living ants. These animals, as we know them to-day, are comparatively rare and retiring, usually with small colonies. It is therefore to be expected that they will be uncommon among the fossils, though they have been found, *e. g.* in amber and at Gurnet Bay. Among the Poneridae, the Myrmecii or Myrmeciinae (not Myrmicinae), the bull-dog ants of Australia, stand apart as a distinct group, considered by Emery and Wheeler to be the most generalised of all known ants. In Baltic amber is a genus of these insects, *Prionomyrmex* Mayr, which Wheeler finds to be still more primitive than *Myrmecia*, and therefore the archetype of all known Formicoidea.

I now have to record another genus, allied to *Myrmecia* and *Prionomyrmex*, from the Green River Eocene of Colorado. It was found last July by Mrs. Cockerell at our Station 1, which is on a spur of the Roan Mountains, at the top of the Ute trail. The

characters cannot be seen as well as in the amber species, but they are sufficient to indicate a distinct type.

*Archimyrmex* new genus.

Rather large, elongated ants, with a general resemblance to *Myrmecia*, but with the eyes (as in *Prionomyrmex*) high up on the side of the head; the epinotum with a distinct elevation (presumably pair of elevations), placed as in *Ectatomma tuberculatum*, but large and obtuse; mandibles less elongated, but still long, the cutting edge with coarse obtuse teeth, between which are smaller ones; femora apparently shorter than in *Myrmecia*; first joint of pedicel elongated, with a dorsal elevation beyond the middle, the joint less massive than in the other two genera, but similar in principle to that of *Myrmecia vindex* Smith; second joint large and robust (its position reversed in the specimen), quite like that of *Myrmecia*, as also is the gaster. The mandibles of *Prionomyrmex* have a reniform denticulation, so those of our insect more resemble *Myrmecia*, which has irregular but much more prominent teeth.

*Archimyrmex* is therefore intermediate in some respects between *Myrmecia* and *Prionomyrmex*, but on account of the position of the eyes should apparently fall in Wheeler's tribe Prionomyrmicini.

*Archimyrmex rostratus* n. sp.

*Worker*.—Colour as preserved brown, the upper part of head and the gaster blackened, the coloration perhaps originally similar to that of *Myrmecia vindex* var. *nigriceps* Mayr. Length nearly 16 mm.; head with mandibles about 4 mm.; thorax about 5.3 mm.; middle femur about 3.7 mm. The specific name is derived from the beak-like effect produced by the mandibles.

SPRING LEPIDOPTERA IN SOUTH AND CENTRAL SPAIN.

BY ALBERT F. ROSA, M.D., F.E.S.

PERHAPS rather late in the day I am penning a few notes on a short trip to Andalusia in the spring of 1921, though I am bound to say the species met with, as will be seen, include nothing new; still it is a few years since any records have been given of the localities visited.

A month seems to be a long time when you are looking forward, but when you deduct the *ida y vuelta* and journeys from one place to another, which apparently always occupy the better part of a day in the South of Spain, there is very little time left for actual work, not to speak of days when none can be done through inclement

weat  
Iberi

I

at G

up a

the r

ridge

on th

more

accou

indiv

loads

and r

as a

being

were

baton

was A

crocei

of th

cemet

ravin

some

two d

it was

The 2

euphe

took

comm

helice.

Th

tired

Hotel

My fir

and it

belia

fresh.

On

another

podali

interes

\* Th

in the s

At Ron

April 19

var. glar

certain

which v