

STRUMIGENYS BULERU species nov.

Insecta: Hymenoptera: Formicidae:
Myrmicinae: Dacetini

William L. Brown, Jr.
Department of Entomology
Cornell University,
Ithaca NY 14853, USA

Pilot Register of Zoology
Card No. 39
Issued 15 November 1988.

DIAGNOSIS, WORKER: A member of the group of *S. godeffroyi*, Australian section, close to *S. cochlearis*, and like it with 3 intercalary denticles in the apical fork of mandible, but larger and more robust, with mandibles shorter and thicker relative to the head.

WORKER, HOLOTYPE: TL 3.7, HL 0.84, HW 0.70 (CI 83), ML 0.36 (MI 43), scape L 0.51, eye L 0.09, petiole L 0.33, WL 0.93 mm.

PARATYPES: TL 3.5-3.6, HL 0.82-0.86, HW 0.69-0.73 (CI 83-84), ML 0.36-0.37 (MI 43-45), WL 0.90-0.97, petiole L 0.33-0.37 mm.

Head and mandibles shown in figure. Compared with *S. cochlearis*: mandible short and straight, except for slightly incurved base, with a straight, narrow, mesal, lamelliform margin; preapical tooth stout; dorsal tooth of apical fork stout, longer than its ventral mate; crowded contiguously between them are 3 intercalary denticles, of which the dorsal-most is smallest. This pattern is much like that of *S. cochlearis*, but the teeth are a little more slender.

Alitrunk stout, compact; dorsal outline as viewed from the side nearly straight from promesonotal summit to propodeum, only very feebly concave in the posterior mesonotal region; propodeal dorsum feebly convex; metanotal groove obsolete. Propodeal teeth about 2/3 as long as the distance between the centers of their bases, short but acute at apex, completely involved in distinct, moderately broad lamellae which are feebly concave above and broadly convex below, reticulate.

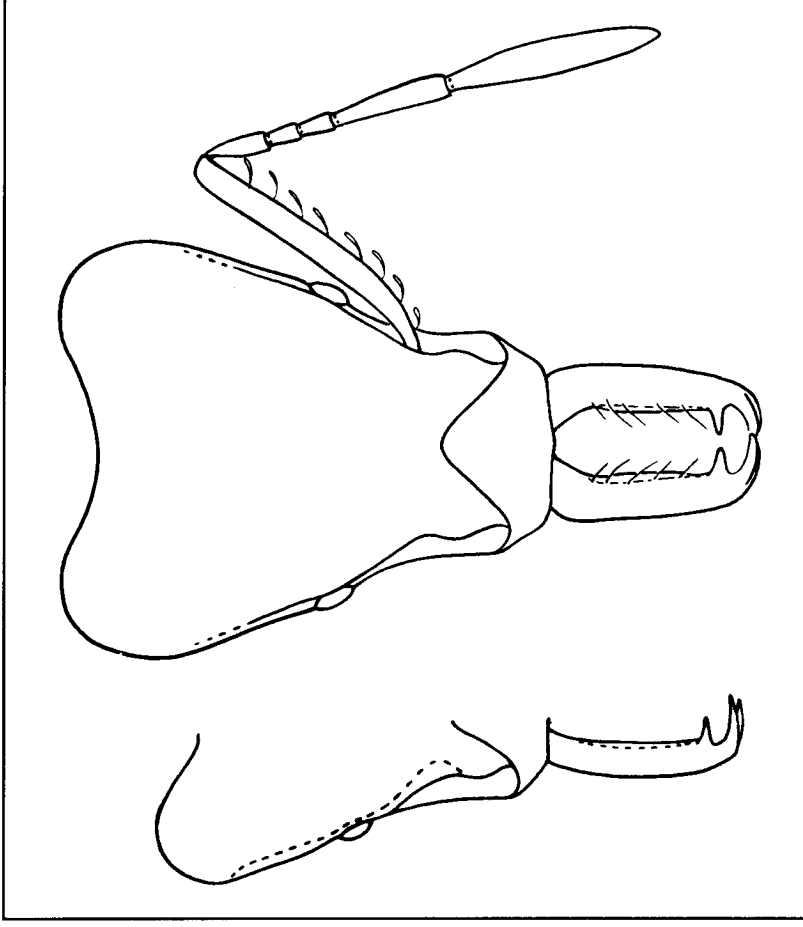


Fig. 1. left, *Strumigenys cochlearis*, worker from South Australia, half-outline of head and mandibles to compare with *Strumigenys buleru* worker from Biloela, Queensland, right, of which pilosity is omitted, except for that fringing anterior scape borders and mesal mandibular margins. Drawings by Susan Poulakis.