

A New Ant Species (Hymenoptera, Formicidae) from China

A.G.Radchenko

Schmalhausen Institute of Zoology, UA-252601 Kiev, MSP, Ukraine

Новий вид мурашок (Hymenoptera, Formicidae) з Китаю. Радченко О. Г. — Описаний за самками та одним самцем з Китаю (р. Сянь-Чань-хе) *Strongylognathus potanini* sp. n. належить до групи *testaceus*, найбільш близький до *S. karawajewi* Pisar.; самки відрізняються від нього та від *S. testaceus* (Schenck) лискучим гладким тілом, відсутністю зубців на проподеумі, формою петиолюса, дрібнішими розмірами тіла тощо; самці відрізняються більш гладкою скульптурою тіла.

Новый вид муравьев (Hymenoptera, Formicidae) из Китая. Радченко А. Г. — Описанный по самкам и единственному самцу из Китая (р. Сянь-Чань-хэ) *Strongylognathus potanini* sp. n. относится к группе *testaceus*; наиболее сходен с *S. karawajewi* Pisar., самки отличаются от него и от *S. testaceus* (Schenck) совершенно гладким телом, отсутствием зубцов на проподеуме, формой петиолюса, мелкими размерами и др.; самцы отличаются сглаженной скульптурой.

5 specimens of the species described below as new were found in the collection of Zoological Institute, Russian Academy of Sciences (St.-Petersburg). I would like to express my thanks to

Dr. D. Kasparian and Dr. Y. Pesenko for their help and support during the study of collection material.

The holotype and 3 paratypes are property of the above Institute, 1 paratype is forwarded to the Schmalhausen Institute of Zoology, National Academy of Sciences of Ukraine (Kiev).

Measurements and indices: HL — head length at midline in full face view from the line which joints occipital corners to the anterior clypeal border; HW — maximal head width in full face view (except eyes); SL — scapes length in side view; AL — diagonal alitrunk length; CI (cephalic index) = HL/HW; SI (scapes index) = HL/SL.

Strongylognathus potanini Radtshenko, sp. n.

(Figs. 1-5)

Holotype queen, China, river Sang-Tshang-khe, 28.VI.1884 (Potanin) [original label text in Russian: «р. Сянь-Чань-хэ, 28.VI.[1]884, Потанин»]; paratypes: 3Q, 1M with same label data.

Dimensions (mm). Females: HL = 0.69-0.71 (holotype: 0.71), HW = 0.62-0.63 (0.63), SL = 0.40-0.43 (0.42), AL = 0.92-0.97 (0.97); male: HL = 0.56, HW = 0.57, SL = 0.29, AL = 1.40.

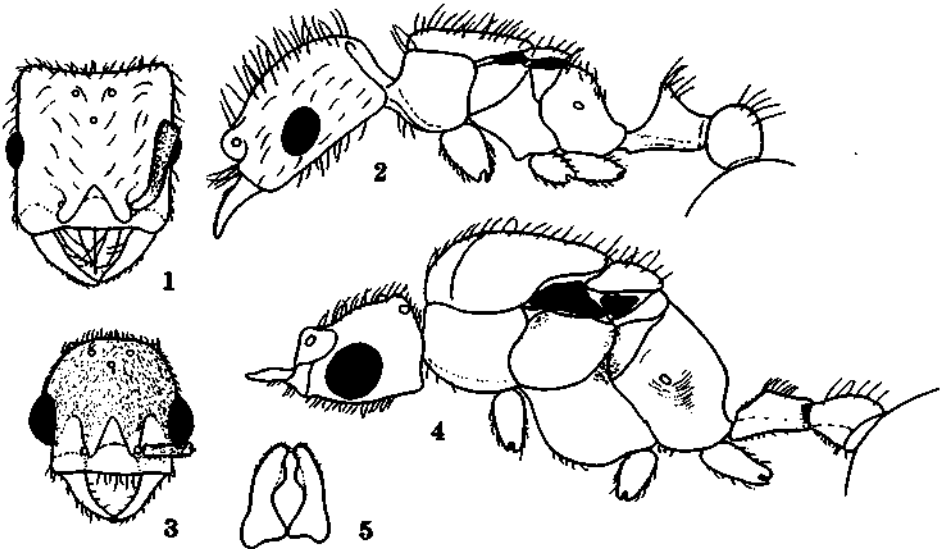
Female. Head slightly elongate (CI = 1.12-1.15 [holotype: 1.12]), with parallel sides, strongly concave occipital border and stretched out occipital corners. Antennal scape short (SI = 1.63-1.75 [1.69]). Propodeum without teeth, sometimes with blunt tubercles only. Petiolar node flattened in profile, with pointed apex. Whole body

smooth and shining, sometimes sides of petiolar and postpetiolar nodes with fine superficial shagrine sculpture only. Body with long erect hairs, legs and antennal scape with decumbent pilosity. Colour reddish-brown, legs and antennal scape ochraceous.

Male. Head somewhat transverse (CI = 0.98), widely rounded behind eyes, occipital border slightly convex, occipital corners stretched out (as seen in profile). Antennal scape short (SI = 1.9). Alitrunk high, propodeum without tubercles and teeth. Petiole low, its node triangular, with rounded apex (see in profile). Head shining, with very fine superficial touch-like rugosity; frontal plate and clypeus smooth and shining. Alitrunk and pedicel smooth and shining, sides of alitrunk with some superficial touch-like rugae only. Body with numerous long outstanding hairs, legs and antennal scape with decumbent pilosity. Colour reddish-brown, legs ochraceous.

Comments. *S. potanini* sp. n. belongs to the testaceus-group and closely related to *S. karawajewi* Pisarski. Females exactly differ from both *S. karawajewi* and *S. testaceus* (Schenk) by entirely smooth body, absence of propodeal teeth, shape of petiolar node, smaller body size, etc. Male differs from these species by fine body sculpture.

Type-specimens of *S. potanini* sp. n. are pinned together with workers of *Tetramorium jacoti* Wheeler; this latter is, in all probability, a host of *S. potanini* sp. n.



Figs. 1-5. *Strongylognathus potanini* sp. n.: 1-2 — holotype Q, 3-5 — paratype M; 1, 3 — head from above; 2, 4 — body in profile, 5 — stipes of genitalia.
IS A.Radchenko, illustr. 1995