

湖北盘腹蚁属一新种记述(膜翅目:蚁科)

王 维 郑哲民

(陕西师范大学动物研究所,西安 710062;第一作者,男,31岁,讲师)

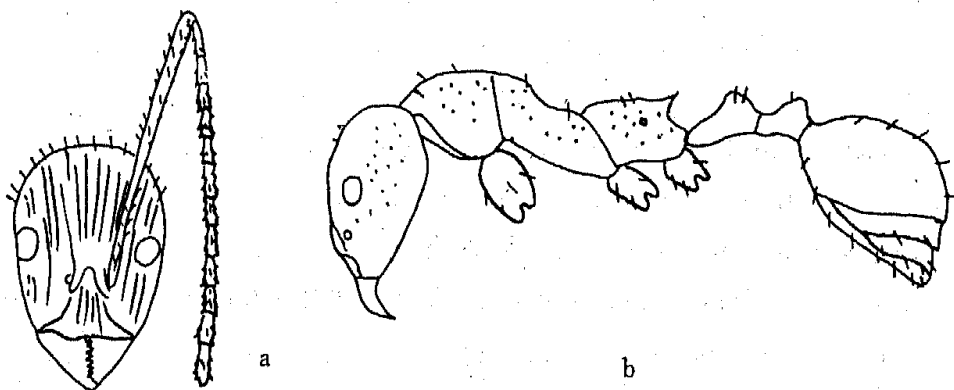
笔者在整理采自湖北省利川市的蚂蚁标本时,发现一新种,现记述如下.模式标本保存在陕西师范大学动物研究所标本室.

凹唇盘腹蚁 *Aphaenogaster incurvicypea* sp. nov.

正模工蚁 体长(TL)6.8 mm,头长(HL)1.7 mm,头宽(HW)1.2 mm,头宽与头长之比(CI)71.4,触角柄节长(SL)2.3 mm,柄节与头宽之比(SI)183,前胸背板宽(PW)0.80 mm,胸长(AL)2.1 mm,复眼直径(ED)0.30 mm,后足胫节长(MTL)0.80 mm.

后头延伸成颈状,边缘反卷成垂直的边.上颚三角形,咀嚼缘具10齿,端部3齿明显,其后的齿弱.唇基具纵条纹,前缘中央宽形凹缺.复眼与触角窝之间具5条纵条纹.额脊短,隆起.触角12节,端部4节伸长,柄节超出后头缘.前胸背板高,前中胸背板缝明显,中胸背板前端形成一横脊,后胸沟深凹,其上布满短纵条纹.并胸腹节背面平直,端部刺粗短,指向后上方.腹柄具长柄,节结高,前倾,后腹柄结背面钝圆,大于腹柄结,后倾.上颚具纵纹.头、胸及腹柄节具密集刻点,中胸侧板和并胸腹节的刻点粗糙,中胸侧板具斜条纹,并胸腹节背面具横皱纹.腹部光亮.头、腹柄结背面及腹部具丰富直立、亚直立毛,胸部具5~6对毛.触角柄节具丰富亚倾斜毛,后足胫节毛稀疏.头、胸及腹柄黑色,上颚、触角、足及腹部黄褐色.

副模工蚁 TL 5.8~6.8 mm,HL 1.4~1.7 mm,HW 1.0~1.2 mm,CI 70.5~71.4 mm,SL 1.8~2.2 mm,SI 180~183 mm,PW 0.70~0.80 mm,AL 1.9~2.1 mm,ED 0.25~0.30 mm,MTL 1.7~2.0 mm. ($n=4$)同正模.



附图 凹唇盘腹蚁 *Aphaenogaster incurvicypea* sp. nov.

a. 工蚁头部正面观;b. 工蚁身体侧面观

正模工蚁:湖北省利川市,1993—05—13,王维.

副模:15 工蚁,同正模.

本种与 *A. beccarii*(Emery)接近,但本种唇基前缘中央凹入,腹部、触角及足黄褐色,头部具粗糙刻点,胸部纵纹较深.可与之区别.

参 考 文 献

- 1 Agosti D, Collingwood C A. A provisional list of the Balkan ants (Hymenoptera: Formicidae) with a key to the worker caste. 2. key to the worker caste, including the European species without the Iberian. Mitt Schweiz. Entomol. Ges., 1987, 60(3—4): 269~270
- 2 Bingham C T., Fauna of British, including Ceylon and Burma. Hymenoptera 2. London: Ants and Cuckoo-Wasps., 1963. 269~277
- 3 Chou L Y, Terayama M. Name lists of insects in Taiwan-Hymenoptera; Apocrita, formicidae. Chinese J. Entomol., 1991, 11(1): 77
- 4 Collingwood C A. Hymenoptera; family formicidae of Saudi Arabia. Fauna Saudi Arabia., 1985, 7: 246~247
- 5 Wheeler W M. Chinese ants. Bull. Mus. Comp. Zool. Harv., 1921, 64: 535~537
- 6 Wheeler W M. A list of known Chinese ants. Peking Nat. Hist. Bull., 1930—1931, 5: 62

[责任编辑 王 勇]

A new species of genus *aphaenogaster* mayr from China (hymenoptera: formicidae)

Wang Wei, Zheng Zhemin

(Institute of Zoology, Shaanxi Normal Univ., 710062 Xi'an, PRC)

Abstract A new species of *Aphaenogaster* Mayr was described from Lichuan city, Hubei province. The type specimens are deposited in the Institute of Zoology, Shaanxi Normal University. *Aphaenogaster incurvicylpea* sp. nov. (figs: a, b).

The new species is similar to *A. beccarii*(Emery), but differs from the latter as following: anterior margin of clypeus with a median notch; gaster, antenna and leg are brownish yellow; head with shagreened sculpture, and alitrunk with deep striate.

Holotype: worker, Lichuan city, Hubei province, 1993—05—13, Wang Wei.

Paratypes: 15 workers, same as the holotype.

Key words formicidae; new species; *Aphaenogaster*