

A NEW GENUS AND SPECIES OF DACETINE ANT (HYM., FORMICIDAE)  
FROM NEW GUINEA

BY HORACE DONISTHORPE, F.Z.S., F.R.E.S., ETC.

Reprinted from 'The Entomologist's Monthly Magazine,' Vol. lxxxiv.

Date of publication: January 11th, 1948. Should be 1949

✓ **Weberidris** gen.n.

♂ *Head* similar to that of *Stegomyrmex* Emery, but the *clypeus* is visible in front of the bifurcated portion of the head. *Head* divided into two lobes anteriorly caused by the *frontal carinae* which form the upper margin of a deep *scrobe*; *clypeus* with two blunt hooks; *antennae* 12-jointed; *maxillary palpi* 2-jointed; *labial palpi* 2-jointed. *Eyes* situated below the *scrobes*.

GENOTYPE: *Weberidris rufo-brunnea* sp.n.

= *Calypt beccarii* Em

**Weberidris rufo-brunnea** sp.n. ✓✓

♂ Reddish brown, mandibles, antennae, and legs a little lighter, clothed with numerous short clubbed scale-like hairs: sculpture of head and thorax rather rugose.

*Head* heart-shaped, temples and posterior angles rounded, posterior border straight in centre; *mandibles* powerful, triangular, with a rather sharp tooth at apex, rest of masticatory border unarmed; *clypeus* projecting anteriorly with a rather blunt hook on each side, longitudinally striate posteriorly, and projecting between the frontal carinae; *frontal area* somewhat indistinct; *frontal carinae* dividing the head anteriorly into two blunt projections, or lobes, and continuing as far as the beginning of the temples, forming the upper margin of a deep *scrobe*; *eyes* situated below the *scrobes*; *antennae* 12-jointed, fitting entirely into the *scrobes*, *scape* rather short, *funiculus* thickened towards apex, with a 4-jointed club, last joint longer than the three preceding joints taken together. *Thorax* rather short, furnished with a neck, broadest at humeral angles, convex on disc, contracted at junction of meso- and epinotum; *pronotum* transverse, sides, anterior border, and humeral angles rounded; suture between pro- and mesonotum curved, fine, but distinct; *mesonotum* transverse, convex, sides rounded; suture between meso- and epinotum indistinct; *epinotum* armed with two rather blunt teeth, or projections, angle between dorsal surface and declivity distinct, *dorsal surface* longer than declivity, *declivity* concave. *Petiole* with a fairly long peduncle, and a broad transverse convex node; *post petiole* transverse, broader than node of petiole, armed beneath with a small, short sharp tooth pointing forwards; *gaster* spherical, convex. *Legs* moderately stout. *Long.* 3.7 mm.

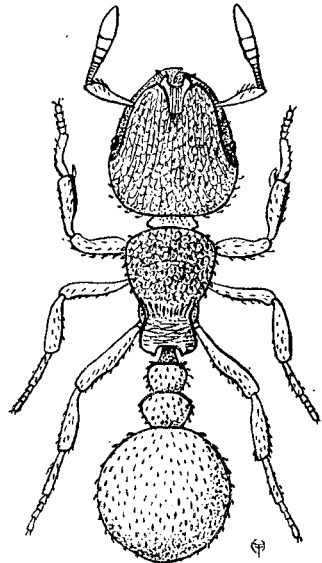


FIG. 1.—*Weberidris rufo-brunnea* sp.n., ♂.

Described from a single worker (fig. 1). Maffin Bay, Dutch New Guinea, June 22nd, 1944, E. S. Ross Coll.

Named in honour of my friend Prof. Neal A. Weber, the eminent myrmecologist.

British Museum (Nat. Hist.), London, S.W.7. July 28th, 1948.